

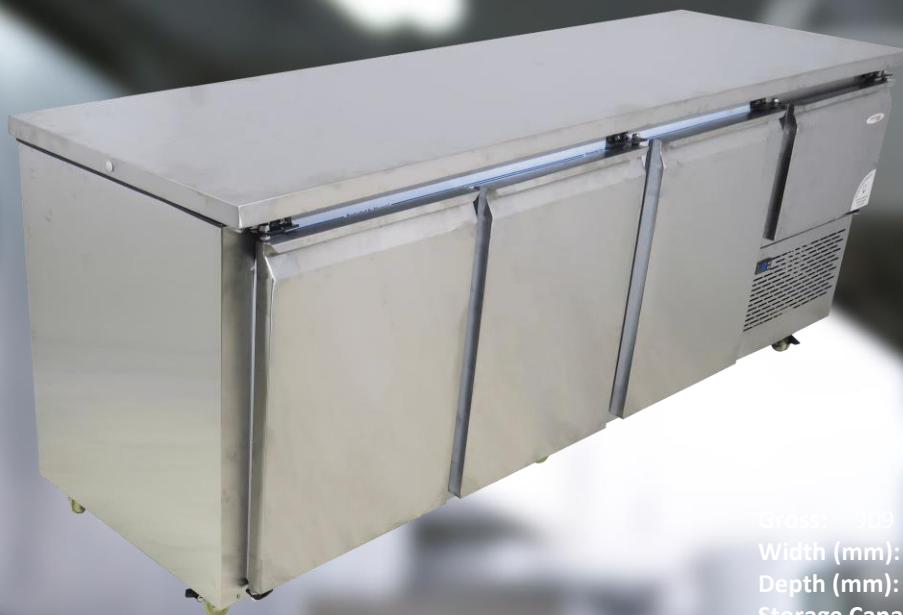


Eezicool

COMMERCIAL REFRIGERATION HVAC & CATERING APPLIANCES SPECIALISTS

3.5 Stainless steel door Underbar

MODEL EB2550SS



FRIDGE *Star*

- 3.5 Door Stainless steel doors
- Commercial range
- Stainless steel sides and internal
- Climate class CC2

Gross: 2500 L

Width (mm): 1724 600 2415 2500

Depth (mm): 575 575 740 820

Storage Capacity: Number of Shelves - 3

Shelve Size - 555mm x 570mm

Weight: Unboxed - 155kg Boxed - 188kg

Climate class: CC2 32.2°C 65% Humidity

H.S Code: 8418.50 8

Cable length: 2.4m

Footprint: 1.9m2

Compliance: COMESA / SADC

Dimensions: FRIDGE FRIDGE (half door) CABINET BOXED

Height (mm): 915 575 1035 1140

Width (mm): 1724 600 2415 2500

Depth (mm): 575 575 740 820

Cooling System: Finned Evaporator - Fan Forced

Temperature Control: Electronic

Energy: Start Current - 4.56 Amps

Run Current - 3 Amps

Consumption - 3.84kwh/24hrs

Finish: Interior - Stainless Steel with Galvanised Side

Exterior - Stainless Steel

Feet: Lockable Castors Wheels



www.eezicool.co.za

WE DELIVER NATIONWIDE

